

CRANE DETAILS

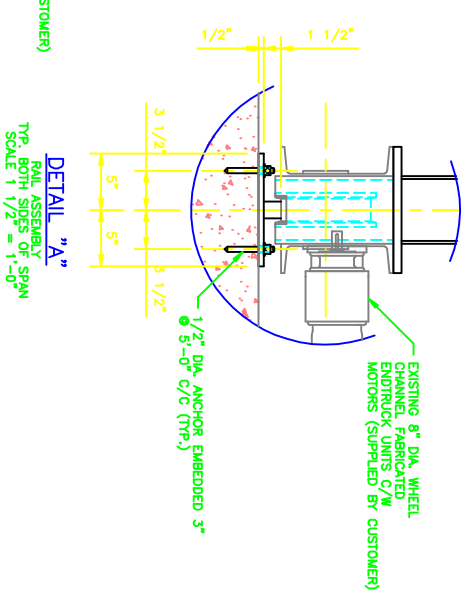
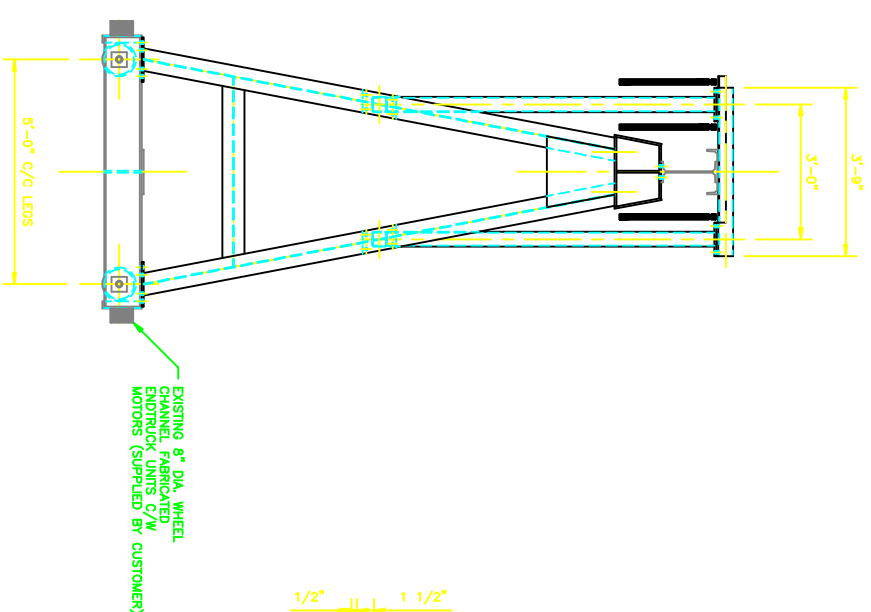
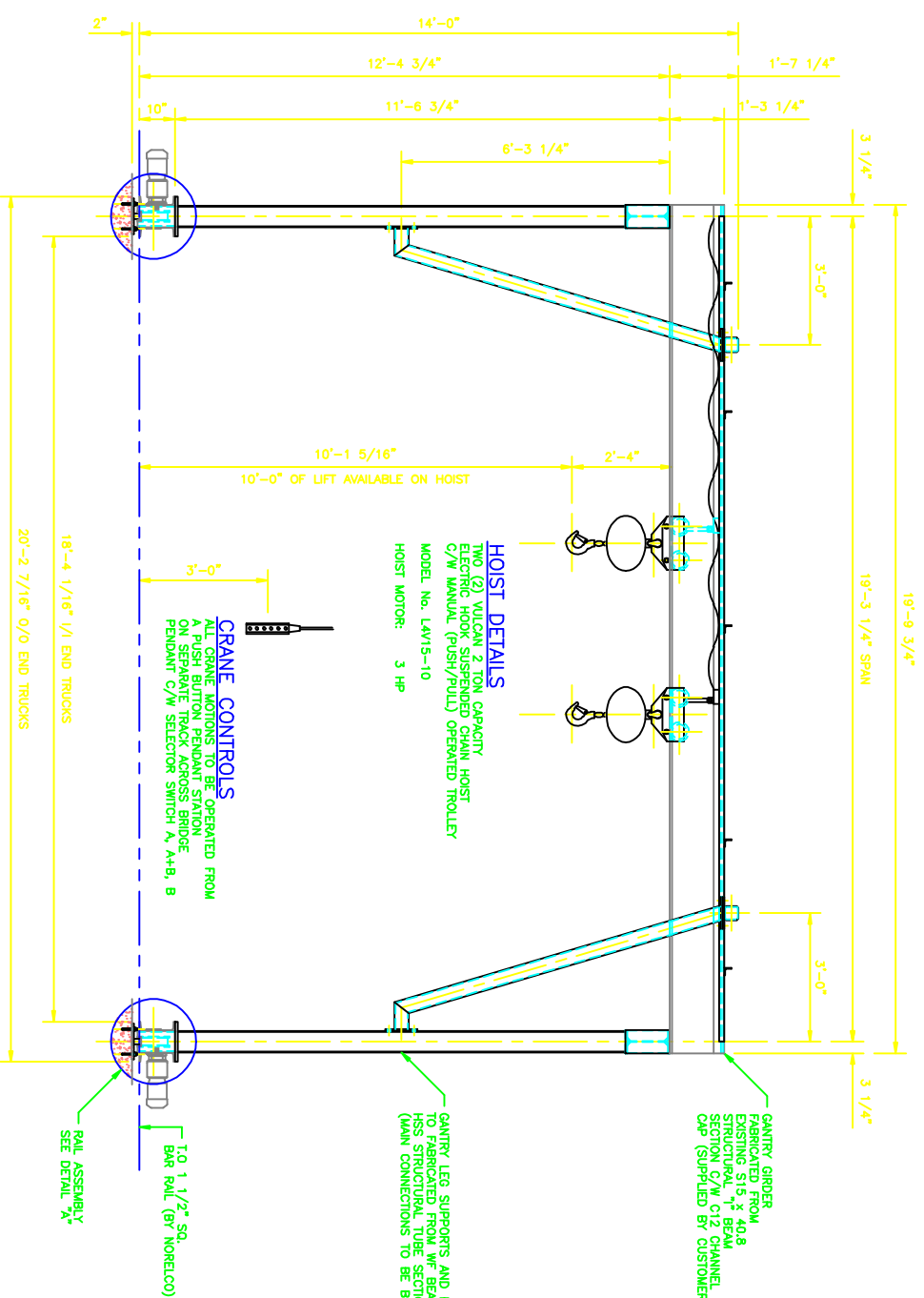
CRANE SERIAL No.: 2948N004E19
 CRANE CAPACITY: 4 TON (2 x 2 TON)
 MAIN HOIST LIFT SPEED(S): 15 f.p.m.
 TROLLEY TRAVEL SPEED(S): MANUAL (PUSH/PULL)
 BRIDGE TRAVEL SPEED(S): EXISTING
 HEIGHT OF LIFT (MAIN): 10'-0" AVAILABLE ON HOIST
 POWER SUPPLY: 575V 3PH 60HZ
 CONTROL VOLTAGE: 115V 1PH 60HZ
 CROSS-BRIDGE POWER WIRING: FLAT CABLE FESTOON
 ELECTRICAL ENCLOSURES: NEMA 12
 WEIGHT OF CRANE: XXX
 WHEEL LOAD (DL + LL) PER WHEEL: XXX
 MAXIMUM BRIDGE DEFLECTION: 1/800

SPECIFICATIONS

CRANE REQUIREMENTS TO MEET OR EXCEED THE FOLLOWING SPECIFICATIONS:
 DESIGN & CONSTRUCTION: CSA CLASS C (MODERATE SERVICE)
 ALL STEEL WORK: CSA 40.21 Gr. 44W
 ALL WELDING: CSA W59 & CSA W47.1
 ALL ELECTRICAL WORK: CSA B167 No. 22
 ALL STEEL WORK TO BE SOLVENT CLEANED AND RECEIVE ONE (1) COAT OF PRIMER AND ONE (1) COAT OF MACHINERY ENAMEL (HIGH VISIBILITY YELLOW).

CRANE FEATURES

1. HOIST TO BE FITTED WITH UPPER AND LOWER TRAVEL LIMITS.
 2. HOIST TO BE FITTED WITH AN OVERLOAD LIMIT DEVICE.



DATE	REVISION	DESCRIPTION
01/25/07	1	ISSUED FOR CONSTRUCTION
01/24/07	0	PRELIMINARY

NORELCO
 INDUSTRIES LTD
 CERTIFIED TO ISO 9002

1991 96th Ave. Surrey, B. C. V4N 4G5
 PHONE: (604) 888-4442
 FAX: (604) 888-3028

CUSTOMER: **BEAVER ELECTRICAL**

PROJECT: **WILLIAMS LAKE
 4 TON (2 x 2 TON) CAPACITY
 SINGLE GIRDER GANTRY CRANE**

SCALE	DRAWINGS	REVISION
1" = 1'-0"	GENERAL ARRANGEMENT	
DATE: JAN. 24/07	DRAWN: L. JOHNSON	1
APPROVED: XXX	A-3663-1	1